



**Larsen Middle School Lancers**

**Welcome to Hybrid Learning!**



# Larsen Middle School Lancers

**¡Bienvenido al Aprendizaje Híbrido!**

# What We Will Cover



- Hybrid Schedule
- Arrival and Departure from School
- Bathroom and Water Policies
- Masks and Social Distancing
- Handwashing
- Hallway Procedures
- Personal Belongings
- Food, Breakfast, and Lunch Procedures
- Self Certify



# Lo que cubriremos



- Horario híbrido
- Horario de entrada y salida de la escuela
- Póliza del baño y agua
- Cubrebocas y distanciamiento social
- Lavado de manos
- Procedimientos del pasillo
- Objetos personales
- Procedimientos de la comida, desayuno y almuerzo
- Autocertificación



B



A



# Hybrid Schedule

- When we have a 5 day week, Mondays will always be remote/synchronous and there will be MS Meet Up from 3:25-3:50.
- Students are assigned to one of three groups - A, B, or C.
- Assigned groups can be found in Infinite Campus (directions for logging into IC are on the LMS website).
- Groups A and B will attend in person classes two consecutive days per week, rotating between periods 1-4 one day and periods 5-8 the next day.
- Group C is all distance learning.
- Note: Students' core subject teachers **will not change** with the new hybrid schedule.
- Second semester starts on January 19th. Follow your second semester schedule on Infinite Campus.

Monday	Tuesday	Wednesday	Thursday	Friday
Synchronous for all	<b>Group A</b> (In-Person 1/2 students)		<b>Group B</b> (In-Person 1/2 Students)	
Period 1 9:30-10:10	Period 1 9:45 - 10:25	Period 8 9:45 - 10:25	Period 1 9:45 - 10:25	Period 8 9:45 - 10:25
Period 2 10:15-10:55	Period 2 10:30 - 11:10	Period 7 10:30 - 11:10	Period 2 10:30 - 11:10	Period 7 10:30 - 11:10
Period 3 11:00-11:40	Period 3 11:15 - 11:55	Period 6 11:15 - 11:55	Period 3 11:15 - 11:55	Period 6 11:15 - 11:55
Period 4 11:45-12:25	Period 4 12:00-12:40	Period 5 12:00-12:40	Period 4 12:00-12:40	Period 5 12:00-12:40
Period 5 12:30-1:10	<b>Student Dismissal/Teacher Transition Time</b> 12:40-1:40			
Period 6 1:15-1:55	<b>Tues/Wed: Groups B/C synchronous in PM</b> <b>Thurs/Fri: Groups A/C synchronous in PM</b>			
Period 7 2:00-2:40	Period 1 1:40 - 2:15	Period 8 1:40 - 2:15	Period 1 1:40 - 2:15	Period 8 1:40 - 2:15
Period 8 2:45-3:25	Period 2 2:20 - 2:55	Period 7 2:20 - 2:55	Period 2 2:20 - 2:55	Period 7 2:20 - 2:55
MS Meet Up/ Office Hours 3:25-3:50	Period 3 3:00 - 3:35	Period 6 3:00 - 3:35	Period 3 3:00 - 3:35	Period 6 3:00 - 3:35
	Period 4 3:40 - 4:15	Period 5 3:40 - 4:15	Period 4 3:40 - 4:15	Period 5 3:40 - 4:15
<i>*MSM Will begin at the start of second semester and will transition during Q4 (time TBD) to Reteach, Retake and Make-ups for students</i>				

# Horario Híbrido

- Cuando tengamos una semana completa de 5 días, los lunes siempre serán remotos/sincrónicos y MS Meet Up se reunirá de 3:25-3:50.
- Los estudiante fueron asignados a uno de los 3 grupos A,B y C
- Los grupos asignados se pueden encontrar en Infinite Campus (las instrucciones para entrar a IC se encuentran en sitio web de LMS).
- Los grupos A y B asistirán en clases presenciales dos días consecutivos a la semana, alternando entre períodos 1-4 un día y períodos 5-8 al día siguiente.
- El grupo C es todo aprendizaje a distancia.
- Nota: Los maestros de las materias principales de los estudiantes no cambiarán con el nuevo horario híbrido.
- El segundo semestre comienza el 19 de enero. Siga su horario de clases del segundo semestre en Infinite Campus.

Monday	Tuesday	Wednesday	Thursday	Friday
Synchronous for all	<b>Group A</b> (In-Person 1/2 students)		<b>Group B</b> (In-Person 1/2 Students)	
Period 1 9:30-10:10	Period 1 9:45 - 10:25	Period 8 9:45 - 10:25	Period 1 9:45 - 10:25	Period 8 9:45 - 10:25
Period 2 10:15-10:55	Period 2 10:30 - 11:10	Period 7 10:30 - 11:10	Period 2 10:30 - 11:10	Period 7 10:30 - 11:10
Period 3 11:00-11:40	Period 3 11:15 - 11:55	Period 6 11:15 - 11:55	Period 3 11:15 - 11:55	Period 6 11:15 - 11:55
Period 4 11:45-12:25	Period 4 12:00-12:40	Period 5 12:00-12:40	Period 4 12:00-12:40	Period 5 12:00-12:40
Period 5 12:30-1:10	<b>Student Dismissal/Teacher Transition Time</b> 12:40-1:40			
Period 6 1:15-1:55	<b>Tues/Wed: Groups B/C synchronous in PM</b> <b>Thurs/Fri: Groups A/C synchronous in PM</b>			
Period 7 2:00-2:40	Period 1 1:40 - 2:15	Period 8 1:40 - 2:15	Period 1 1:40 - 2:15	Period 8 1:40 - 2:15
Period 8 2:45-3:25	Period 2 2:20 - 2:55	Period 7 2:20 - 2:55	Period 2 2:20 - 2:55	Period 7 2:20 - 2:55
MS Meet Up/ Office Hours 3:25-3:50	Period 3 3:00 - 3:35	Period 6 3:00 - 3:35	Period 3 3:00 - 3:35	Period 6 3:00 - 3:35
	Period 4 3:40 - 4:15	Period 5 3:40 - 4:15	Period 4 3:40 - 4:15	Period 5 3:40 - 4:15
<i>*MSM Will begin at the start of second semester and will transition during Q4 (time TBD) to Reteach, Retake and Make-ups for students</i>				

# Hybrid Schedule

## Mondays

- All Mondays are remote when we have a 5 day week
- There will be MS Meet Up from 3:25-3:50 when we have a 5 day week
- Synchronous for periods 1-8 for all groups (A, B, C)
- Note: class period times are different on Mondays than the rest of the week
- February 1st will be our first 5 day week

Monday	Tuesday	Wednesday	Thursday	Friday
Synchronous for all	<b>Group A</b> (In-Person 1/2 students)		<b>Group B</b> (In-Person 1/2 Students)	
Period 1 9:30-10:10	Period 1 9:45 - 10:25	Period 8 9:45 - 10:25	Period 1 9:45 - 10:25	Period 8 9:45 - 10:25
Period 2 10:15-10:55	Period 2 10:30 - 11:10	Period 7 10:30 - 11:10	Period 2 10:30 - 11:10	Period 7 10:30 - 11:10
Period 3 11:00-11:40	Period 3 11:15 - 11:55	Period 6 11:15 - 11:55	Period 3 11:15 - 11:55	Period 6 11:15 - 11:55
Period 4 11:45-12:25	Period 4 12:00-12:40	Period 5 12:00-12:40	Period 4 12:00-12:40	Period 5 12:00-12:40
Period 5 12:30-1:10	<b>Student Dismissal/Teacher Transition Time</b> 12:40-1:40			
Period 6 1:15-1:55	<b>Tues/Wed: Groups B/C synchronous in PM</b> <b>Thurs/Fri: Groups A/C synchronous in PM</b>			
Period 7 2:00-2:40	Period 1 1:40 - 2:15	Period 8 1:40 - 2:15	Period 1 1:40 - 2:15	Period 8 1:40 - 2:15
Period 8 2:45-3:25	Period 2 2:20 - 2:55	Period 7 2:20 - 2:55	Period 2 2:20 - 2:55	Period 7 2:20 - 2:55
MS Meet Up/ Office Hours 3:25-3:50	Period 3 3:00 - 3:35	Period 6 3:00 - 3:35	Period 3 3:00 - 3:35	Period 6 3:00 - 3:35
	Period 4 3:40 - 4:15	Period 5 3:40 - 4:15	Period 4 3:40 - 4:15	Period 5 3:40 - 4:15

\*MSM Will begin at the start of second semester and will transition during Q4 (time TBD) to Reteach, Retake and Make-ups for students

# Horario híbrido los lunes

- Todos los lunes son remotos cuando tenemos una semana de 5 días
- Habrá MS Meet Up de 3:25-3:50 cuando tengamos una semana de 5 días
- Sincrónico para los períodos 1-8 para todos los grupos (A, B, C)
- Nota: Los horarios de los períodos de clases son diferentes los lunes que el resto de la semana
- El 1 de febrero será nuestra primera semana de 5 días

Monday	Tuesday	Wednesday	Thursday	Friday
Synchronous for all	<b>Group A</b> (In-Person 1/2 students)		<b>Group B</b> (In-Person 1/2 Students)	
Period 1 9:30-10:10	Period 1 9:45 - 10:25	Period 8 9:45 - 10:25	Period 1 9:45 - 10:25	Period 8 9:45 - 10:25
Period 2 10:15-10:55	Period 2 10:30 - 11:10	Period 7 10:30 - 11:10	Period 2 10:30 - 11:10	Period 7 10:30 - 11:10
Period 3 11:00-11:40	Period 3 11:15 - 11:55	Period 6 11:15 - 11:55	Period 3 11:15 - 11:55	Period 6 11:15 - 11:55
Period 4 11:45-12:25	Period 4 12:00-12:40	Period 5 12:00-12:40	Period 4 12:00-12:40	Period 5 12:00-12:40
Period 5 12:30-1:10	<b>Student Dismissal/Teacher Transition Time</b> 12:40-1:40			
Period 6 1:15-1:55	<b>Tues/Wed: Groups B/C synchronous in PM</b> <b>Thurs/Fri: Groups A/C synchronous in PM</b>			
Period 7 2:00-2:40	Period 1 1:40 - 2:15	Period 8 1:40 - 2:15	Period 1 1:40 - 2:15	Period 8 1:40 - 2:15
Period 8 2:45-3:25	Period 2 2:20 - 2:55	Period 7 2:20 - 2:55	Period 2 2:20 - 2:55	Period 7 2:20 - 2:55
MS Meet Up/ Office Hours 3:25-3:50	Period 3 3:00 - 3:35	Period 6 3:00 - 3:35	Period 3 3:00 - 3:35	Period 6 3:00 - 3:35
	Period 4 3:40 - 4:15	Period 5 3:40 - 4:15	Period 4 3:40 - 4:15	Period 5 3:40 - 4:15

*\*MSM Will begin at the start of second semester and will transition during Q4 (time TBD) to Reteach, Retake and Make-ups for students*



# Hybrid Schedule Group A

- On the first two days of in person learning:
  - Students are in person during the morning
  - Students are asynchronous and remote in the afternoon
- On the last two days of in person learning:
  - Students are asynchronous and remote in the morning
  - Students are synchronous and remote during the afternoon

Jan. 19 & 20 in person (Tues/Wed) no school Mon 1/18

Jan. 25 & 26 in person (Mon/Tues) no school Fri 1/29

Feb. 1 - 5 - first full 5 day week, follow full Mon-Fri schedule as shown to the right

Monday	Tuesday	Wednesday	Thursday	Friday
Synchronous for all	Group A			
Period 1 9:30-10:10	Period 1 9:45 - 10:25	Period 8 9:45 - 10:25	Asynchronous (independent work, post-secondary planning, social-emotional learning, academic support) 9:45 - 12:40	Asynchronous (independent work, post-secondary planning, social-emotional learning, academic support) 9:45 - 12:40
Period 2 10:15-10:55	Period 2 10:30 - 11:10	Period 7 10:30 - 11:10		
Period 3 11:00-11:40	Period 3 11:15 - 11:55	Period 6 11:15 - 11:55		
Period 4 11:45-12:25	Period 4 12:00-12:40	Period 5 12:00-12:40		
Period 5 12:30-1:10	Student Dismissal/Teacher Transition Time 12:40-1:40			
Period 6 1:15-1:55	Asynchronous (independent work, post-secondary planning, social-emotional learning, academic support) 1:40 - 4:15	Asynchronous (independent work, post-secondary planning, social-emotional learning, academic support) 1:40 - 4:15	Period 1 1:40 - 2:15	Period 8 1:40 - 2:15
Period 7 2:00-2:40			Period 2 2:20 - 2:55	Period 7 2:20 - 2:55
Period 8 2:45-3:25			Period 3 3:00 - 3:35	Period 6 3:00 - 3:35
MS Meet Up/ Office Hours 3:25-3:50			Period 4 3:40 - 4:15	Period 5 3:40 - 4:15
*MSM Will begin at the start of second semester and will transition during Q4 (time TBD) to Reteach, Retake and Make-ups for students				

# Horario híbrido

## Grupo A

- En los dos primeros días de aprendizaje en persona:
  - Los estudiantes están en persona durante la mañana
  - Los estudiantes son asíncronos y remotos por la tarde
- En los últimos dos días de aprendizaje en persona:
  - Los estudiantes son asíncronos y remotos por la mañana
  - Los estudiantes son síncronos y remotos durante la tarde

**19 y 20 de enero en persona (martes/miércoles) no hay escuela  
Lunes 1/18**

**25 y 26 de enero en persona (lunes/martes) no hay escuela el  
Viernes 1/29**

**El 1 - 5 de febrero** - es la primera semana completa de 5 días, siga el horario completo de lunes a viernes como se muestra a la derecha

Monday	Tuesday	Wednesday	Thursday	Friday
Synchronous for all	Group A			
Period 1 9:30-10:10	Period 1 9:45 - 10:25	Period 8 9:45 - 10:25	Asynchronous (independent work, post-secondary planning, social-emotional learning, academic support) 9:45 - 12:40	Asynchronous (independent work, post-secondary planning, social-emotional learning, academic support) 9:45 - 12:40
Period 2 10:15-10:55	Period 2 10:30 - 11:10	Period 7 10:30 - 11:10		
Period 3 11:00-11:40	Period 3 11:15 - 11:55	Period 6 11:15 - 11:55		
Period 4 11:45-12:25	Period 4 12:00-12:40	Period 5 12:00-12:40		
Period 5 12:30-1:10	Student Dismissal/Teacher Transition Time 12:40-1:40			
Period 6 1:15-1:55	Asynchronous (independent work, post-secondary planning, social-emotional learning, academic support) 1:40 - 4:15	Asynchronous (independent work, post-secondary planning, social-emotional learning, academic support) 1:40 - 4:15	Period 1 1:40 - 2:15	Period 8 1:40 - 2:15
Period 7 2:00-2:40			Period 2 2:20 - 2:55	Period 7 2:20 - 2:55
Period 8 2:45-3:25			Period 3 3:00 - 3:35	Period 6 3:00 - 3:35
MS Meet Up/ Office Hours 3:25-3:50			Period 4 3:40 - 4:15	Period 5 3:40 - 4:15
*MSM Will begin at the start of second semester and will transition during Q4 (time TBD) to Reteach, Retake and Make-ups for students				

# Hybrid Schedule Group B

- On the first two days of in person learning:
  - Students are asynchronous and remote in the morning
  - Students are synchronous and remote during the afternoon
- On the last two days of in person learning:
  - Students are in person during the morning
  - Students are asynchronous and remote in the afternoon
  -

**Jan. 21 & 22** in person (Thurs/Fri) no school Mon 1/18

**Jan. 27 & 28** in person (Wed/Thurs) no school Fri 1/29

**Feb. 1 - 5** - first full 5 day week, follow full Mon-Fri schedule as shown to the right

Monday	Tuesday	Wednesday	Thursday	Friday
Synchronous for all	Group B			
Period 1 9:30-10:10	Asynchronous (independent work, post-secondary planning, social-emotional learning, academic support) 9:45 - 12:40	Asynchronous (independent work, post-secondary planning, social-emotional learning, academic support) 9:45 - 12:40	Period 1 9:45 - 10:25	Period 8 9:45 - 10:25
Period 2 10:15-10:55			Period 2 10:30 - 11:10	Period 7 10:30 - 11:10
Period 3 11:00-11:40			Period 3 11:15 - 11:55	Period 6 11:15 - 11:55
Period 4 11:45-12:25			Period 4 12:00-12:40	Period 5 12:00-12:40
Period 5 12:30-1:10	Student Dismissal/Teacher Transition Time 12:40-1:40			
Period 6 1:15-1:55	Period 1 1:40 - 2:15	Period 8 1:40 - 2:15	Asynchronous (independent work, post-secondary planning, social-emotional learning, academic support) 1:40 - 4:15	Asynchronous (independent work, post-secondary planning, social-emotional learning, academic support) 1:40 - 4:15
Period 7 2:00-2:40	Period 2 2:20 - 2:55	Period 7 2:20 - 2:55		
Period 8 2:45-3:25	Period 3 3:00 - 3:35	Period 6 3:00 - 3:35		
MS Meet Up/ Office Hours 3:25-3:50	Period 4 3:40 - 4:15	Period 5 3:40 - 4:15		
*MSM Will begin at the start of second semester and will transition during Q4 (time TBD) to Reteach, Retake and Make-ups for students				

# Horario híbrido

## Grupo B

- En los dos primeros días de aprendizaje en persona:
  - Los estudiantes son asíncronos y remotos por la mañana
  - Los estudiantes son sincrónicos y remotos durante la tarde
- Los últimos dos días de aprendizaje en persona:
  - Los estudiantes estarán en persona durante la mañana
  - Los estudiantes estarán asincrónicos y remotos por la tarde
  -

**Enero 21 & 22** en persona (**Jueves/Viernes**) no hay escuela 1/18

**Enero 27 & 28** en persona (**Miércoles/Jueves**) no hay escuela 1/29

**Feb. 1 a 5** - Primera semana completa de 5 días, siga el horario completo de lunes a viernes como se muestra a la derecha

Monday	Tuesday	Wednesday	Thursday	Friday
Synchronous for all	Group B			
Period 1 9:30-10:10	Asynchronous (independent work, post-secondary planning, social-emotional learning, academic support) 9:45 - 12:40	Asynchronous (independent work, post-secondary planning, social-emotional learning, academic support) 9:45 - 12:40	Period 1 9:45 - 10:25	Period 8 9:45 - 10:25
Period 2 10:15-10:55			Period 2 10:30 - 11:10	Period 7 10:30 - 11:10
Period 3 11:00-11:40			Period 3 11:15 - 11:55	Period 6 11:15 - 11:55
Period 4 11:45-12:25			Period 4 12:00-12:40	Period 5 12:00-12:40
Period 5 12:30-1:10	Student Dismissal/Teacher Transition Time 12:40-1:40			
Period 6 1:15-1:55	Period 1 1:40 - 2:15	Period 8 1:40 - 2:15	Asynchronous (independent work, post-secondary planning, social-emotional learning, academic support) 1:40 - 4:15	Asynchronous (independent work, post-secondary planning, social-emotional learning, academic support) 1:40 - 4:15
Period 7 2:00-2:40	Period 2 2:20 - 2:55	Period 7 2:20 - 2:55		
Period 8 2:45-3:25	Period 3 3:00 - 3:35	Period 6 3:00 - 3:35		
MS Meet Up/ Office Hours 3:25-3:50	Period 4 3:40 - 4:15	Period 5 3:40 - 4:15		
*MSM Will begin at the start of second semester and will transition during Q4 (time TBD) to Reteach, Retake and Make-ups for students				

# Hybrid Schedule Group C

- All distance learning
- 4 days per week
  - Asynchronous in the morning
  - Synchronous in the afternoon
- When there is a 5 day week, follow schedule to the right
- **February 1 - 5** - first full 5 day week, follow schedule as shown to the right

Monday	Tuesday	Wednesday	Thursday	Friday
Synchronous for all	<b>Group C (Distance Learners)</b>			
Period 1 9:30-10:10	Asynchronous (independent work, post-secondary planning, social-emotional learning, academic support) 9:45 - 12:40	Asynchronous (independent work, post-secondary planning, social-emotional learning, academic support) 9:45 - 12:40	Asynchronous (independent work, post-secondary planning, social-emotional learning, academic support) 9:45 - 12:40	Asynchronous (independent work, post-secondary planning, social-emotional learning, academic support) 9:45 - 12:40
Period 2 10:15-10:55				
Period 3 11:00-11:40				
Period 4 11:45-12:25				
Period 5 12:30-1:10	<b>Student Dismissal/Teacher Transition Time 12:40-1:40</b>			
Period 6 1:15-1:55	Period 1 1:40 - 2:15	Period 8 1:40 - 2:15	Period 1 1:40 - 2:15	Period 8 1:40 - 2:15
Period 7 2:00-2:40	Period 2 2:20 - 2:55	Period 7 2:20 - 2:55	Period 2 2:20 - 2:55	Period 7 2:20 - 2:55
Period 8 2:45-3:25	Period 3 3:00 - 3:35	Period 6 3:00 - 3:35	Period 3 3:00 - 3:35	Period 6 3:00 - 3:35
MS Meet Up/ Office Hours 3:25-3:50	Period 4 3:40 - 4:15	Period 5 3:40 - 4:15	Period 4 3:40 - 4:15	Period 5 3:40 - 4:15
*MSM Will begin at the start of second semester and will transition during Q4 (time TBD) to Reteach, Retake and Make-ups for students				

# Horario híbrido

## Grupo C

- Todo el aprendizaje a distancia
- 4 días por semana
  - Asíncrono por la mañana
  - Sincrónico por la tarde
- Cuando tengamos una semana de 5 días, siga el horario a la derecha
- **1ro a 5 de febrero** -sera la primera semana completa de 5 días, siga el horario como se muestra a la derecha

Monday	Tuesday	Wednesday	Thursday	Friday
Synchronous for all	<b>Group C (Distance Learners)</b>			
Period 1 9:30-10:10	Asynchronous (independent work, post-secondary planning, social-emotional learning, academic support) 9:45 - 12:40	Asynchronous (independent work, post-secondary planning, social-emotional learning, academic support) 9:45 - 12:40	Asynchronous (independent work, post-secondary planning, social-emotional learning, academic support) 9:45 - 12:40	Asynchronous (independent work, post-secondary planning, social-emotional learning, academic support) 9:45 - 12:40
Period 2 10:15-10:55				
Period 3 11:00-11:40				
Period 4 11:45-12:25				
Period 5 12:30-1:10	<b>Student Dismissal/Teacher Transition Time 12:40-1:40</b>			
Period 6 1:15-1:55	Period 1 1:40 - 2:15	Period 8 1:40 - 2:15	Period 1 1:40 - 2:15	Period 8 1:40 - 2:15
Period 7 2:00-2:40	Period 2 2:20 - 2:55	Period 7 2:20 - 2:55	Period 2 2:20 - 2:55	Period 7 2:20 - 2:55
Period 8 2:45-3:25	Period 3 3:00 - 3:35	Period 6 3:00 - 3:35	Period 3 3:00 - 3:35	Period 6 3:00 - 3:35
MS Meet Up/ Office Hours 3:25-3:50	Period 4 3:40 - 4:15	Period 5 3:40 - 4:15	Period 4 3:40 - 4:15	Period 5 3:40 - 4:15
*MSM Will begin at the start of second semester and will transition during Q4 (time TBD) to Reteach, Retake and Make-ups for students				

# Hybrid Schedule Group C

- When there is no school on a Monday, follow schedule to the right
- There is no school on **Monday, 1/18**

Monday	Tuesday	Wednesday	Thursday	Friday
<b>Group C (Distance Learners)</b>				
<b>No School on Monday</b>	Asynchronous (independent work, post- secondary planning, social- emotional learning, academic support) 9:45 - 12:40	Asynchronous (independent work, post- secondary planning, social- emotional learning, academic support) 9:45 - 12:40	Asynchronous (independent work, post- secondary planning, social- emotional learning, academic support) 9:45 - 12:40	Asynchronous (independent work, post- secondary planning, social- emotional learning, academic support) 9:45 - 12:40
	<b>Student Dismissal/Teacher Transition Time 12:40-1:40</b>			
	Period 1 1:40 - 2:15	Period 8 1:40 - 2:15	Period 1 1:40 - 2:15	Period 8 1:40 - 2:15
	Period 2 2:20 - 2:55	Period 7 2:20 - 2:55	Period 2 2:20 - 2:55	Period 7 2:20 - 2:55
	Period 3 3:00 - 3:35	Period 6 3:00 - 3:35	Period 3 3:00 - 3:35	Period 6 3:00 - 3:35
Period 4 3:40 - 4:15	Period 5 3:40 - 4:15	Period 4 3:40 - 4:15	Period 5 3:40 - 4:15	
<i>*MSM Will begin at the start of second semester and will transition during Q4 (time TBD) to Reteach, Retake and Make-ups for students</i>				

# Horario híbrido

## Grupo C

- Cuando no haya escuela un lunes, siga el horario a la derecha
- No hay escuela el lunes, 1/18

Monday	Tuesday	Wednesday	Thursday	Friday
<b>Group C (Distance Learners)</b>				
<b>No School on Monday</b>	Asynchronous (independent work, post-secondary planning, social-emotional learning, academic support) 9:45 - 12:40	Asynchronous (independent work, post-secondary planning, social-emotional learning, academic support) 9:45 - 12:40	Asynchronous (independent work, post-secondary planning, social-emotional learning, academic support) 9:45 - 12:40	Asynchronous (independent work, post-secondary planning, social-emotional learning, academic support) 9:45 - 12:40
	<b>Student Dismissal/Teacher Transition Time 12:40-1:40</b>			
	Period 1 1:40 - 2:15	Period 8 1:40 - 2:15	Period 1 1:40 - 2:15	Period 8 1:40 - 2:15
	Period 2 2:20 - 2:55	Period 7 2:20 - 2:55	Period 2 2:20 - 2:55	Period 7 2:20 - 2:55
	Period 3 3:00 - 3:35	Period 6 3:00 - 3:35	Period 3 3:00 - 3:35	Period 6 3:00 - 3:35
Period 4 3:40 - 4:15	Period 5 3:40 - 4:15	Period 4 3:40 - 4:15	Period 5 3:40 - 4:15	
<i>*MSM Will begin at the start of second semester and will transition during Q4 (time TBD) to Reteach, Retake and Make-ups for students</i>				



# Hybrid Schedule Group C

- If there is no school on a Friday, follow schedule to the right
- There is no school on Friday, 1/29

Monday	Tuesday	Wednesday	Thursday	Friday
<b>Group C (Distance Learners)</b>				<b>No School on Friday</b>
Asynchronous (independent work, post- secondary planning, social- emotional learning, academic support) 9:45 - 12:40	Asynchronous (independent work, post- secondary planning, social- emotional learning, academic support) 9:45 - 12:40	Asynchronous (independent work, post- secondary planning, social- emotional learning, academic support) 9:45 - 12:40	Asynchronous (independent work, post- secondary planning, social- emotional learning, academic support) 9:45 - 12:40	
<b>Student Dismissal/Teacher Transition Time 12:40-1:40</b>				
Period 1 1:40 - 2:15	Period 8 1:40 - 2:15	Period 1 1:40 - 2:15	Period 8 1:40 - 2:15	
Period 2 2:20 - 2:55	Period 7 2:20 - 2:55	Period 2 2:20 - 2:55	Period 7 2:20 - 2:55	
Period 3 3:00 - 3:35	Period 6 3:00 - 3:35	Period 3 3:00 - 3:35	Period 6 3:00 - 3:35	
Period 4 3:40 - 4:15	Period 5 3:40 - 4:15	Period 4 3:40 - 4:15	Period 5 3:40 - 4:15	
<i>*MSM Will begin at the start of second semester and will transition during Q4 (time TBD) to Reteach, Retake and Make-ups for students</i>				

# Horario híbrido Group C

- Si no hay escuela en un viernes, siga el horario a la derecha
- No hay escuela el viernes, 1/29

Monday	Tuesday	Wednesday	Thursday	Friday
<b>Group C (Distance Learners)</b>				No School on Friday
Asynchronous (independent work, post- secondary planning, social- emotional learning, academic support) 9:45 - 12:40	Asynchronous (independent work, post- secondary planning, social- emotional learning, academic support) 9:45 - 12:40	Asynchronous (independent work, post- secondary planning, social- emotional learning, academic support) 9:45 - 12:40	Asynchronous (independent work, post- secondary planning, social- emotional learning, academic support) 9:45 - 12:40	
<b>Student Dismissal/Teacher Transition Time 12:40-1:40</b>				
Period 1 1:40 - 2:15	Period 8 1:40 - 2:15	Period 1 1:40 - 2:15	Period 8 1:40 - 2:15	
Period 2 2:20 - 2:55	Period 7 2:20 - 2:55	Period 2 2:20 - 2:55	Period 7 2:20 - 2:55	
Period 3 3:00 - 3:35	Period 6 3:00 - 3:35	Period 3 3:00 - 3:35	Period 6 3:00 - 3:35	
Period 4 3:40 - 4:15	Period 5 3:40 - 4:15	Period 4 3:40 - 4:15	Period 5 3:40 - 4:15	
<i>*MSM Will begin at the start of second semester and will transition during Q4 (time TBD) to Reteach, Retake and Make-ups for students</i>				

# Arrival to School



- Bus students will line up 6 feet apart at Door 1.
- Walker students will line up 6 feet apart at Door 2.
- There will be dots painted 6 feet apart in the front of the school. Students will be expected to line up on a dot upon arrival. If no dot, keep social distant spacing of 6 feet apart.
- There will be staff members outside directing students where to go.
- Doors will be opened at 9:40 am, students will enter the building and report directly to their first hour.
- Note: Students **do not** have lockers during this time and **can** carry their backpacks to classes.

*If it is raining or too cold outside, 7th graders will be sent to the library and 8th graders will be sent to the cafeteria.*

# Llegada a la escuela



- Los estudiantes que toman el autobús harán fila a 6 pies de distancia en la puerta 1.
- Los estudiantes que caminan harán fila a 6 pies de distancia en la puerta 2.
- Habrá puntos pintados a 6 pies de distancia en la parte delantera de la escuela.
- Se espera que los estudiantes se formen en un punto a su llegada. Si no hay punto, mantenga el espaciado social distante de 6 pies de distancia.
- Habrá miembros del personal afuera dirigiendo a los estudiantes a donde ir.
- Las puertas se abrirán a las 9:40 am, los estudiantes entrarán en el edificio y reportarán directamente a su primera clase.
- Nota: Los estudiantes no tienen casilleros durante este tiempo y pueden llevar sus mochilas a las clases.
- 

*Si llueve o hace demasiado frío afuera, los estudiantes de 7mo grado serán enviados a la biblioteca y los estudiantes de 8 grado serán enviados a la cafetería.*



# Departure from School



- At the end of the day, students will be dismissed and sent directly outside.
- On the way out of the classroom, students will take a prepackaged breakfast and lunch bag.
- Dismal times are as followed:
  - Walkers - 12:35pm
  - Riders - 12:36pm
  - First floor - 12:37pm
  - Second floor - 12:38pm
- Bus students will go directly to the Gym or Cafeteria.



# Salida de la escuela



- Al final del día, los estudiantes serán despedidos y enviados directamente afuera.
- Al salir de la escuela, los estudiantes tomarán un desayuno y una bolsa de almuerzo preempaquetados.
- Los horarios de salidas son los siguientes:
  - Los que caminan- 12:35pm
  - Los que toman el autobús 12:36pm
  - Primer piso - 12:37pm
  - Segundo piso- 12:38pm
  - Los estudiantes que toman el autobús se irán directamente al Gimnasio o Cafetería.



# Water Policy

- All drinking fountains will be turned off, however, the filler stations will be available to students.
- Students will be allowed to carry a water bottle. Please keep water bottle in backpack.
- Students can drink water during class time only. Students should ask their teacher to drink water, go into the hallway, lower their mask, and drink water. Each teacher will have their own classroom policy on water.
- Students cannot take a drink of water during passing periods because masks need to be worn **at all times**.

Use filler station



# La póliza del agua



- Todas las fuentes de agua potable estarán apagadas, sin embargo, las estaciones de filtro de agua estarán disponibles para los estudiantes.
- Se permitirá a los estudiantes llevar una botella de agua. Por favor, mantenga la botella de agua en la mochila.
- Los estudiantes solo pueden beber agua durante el horario de clase. Los estudiantes deben pedir permiso a su maestro para poder beber agua, tiene que salir al pasillo, que bajarse la mascarilla y beber agua. Cada maestro tendrá su propia política en el salón de clases sobre el agua.
- Los estudiantes no pueden tomar un trago de agua entre los períodos porque las máscaras deben usarse en todo momento.

Use filler station



B

A



# Bathroom Policy



- Students can only take a bathroom break during a class period in case of emergency. Student restrooms will be locked during the day, including during passing periods.
- If you need to use the restroom during a class period, your teacher should call the main office and you will be escorted to the bathroom. Each teacher will have their own classroom policy for bathroom breaks.
- Only one student should be in the bathroom at a time.
- Bathrooms will be cleaned periodically throughout the day.



# La póliza del baño



- Los estudiantes solo pueden utilizar el baño durante un período de clase en caso de emergencia. Los baños de los estudiantes estarán cerrados durante el día, incluso durante los períodos de paso.
- Si necesita usar el baño durante clase, su maestro debe llamar a la oficina principal y serás acompañado al baño. Cada maestro tendrá su propia políza de clase para descansos para el baño.
- Sólo un estudiante debe estar en el baño a la vez.
- Los baños se limpiarán periódicamente durante todo el día.



B



A



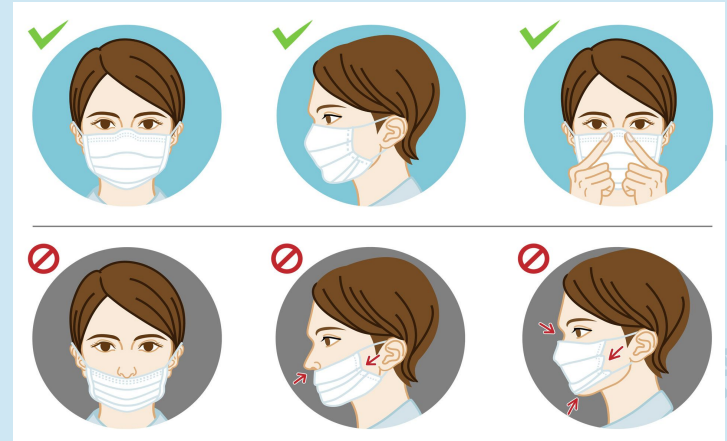
# Masks and Social Distancing



- Masks must be worn at the bus stop, on the bus, anytime you are in the building, and if you are waiting outside to get into the building.
- Do your best to stay 6 feet apart from people as much as you can.
- Desks in classrooms, the cafeteria, offices, and library are all 6 feet apart.

B

[Watch this video on how to wear a mask - click here](#)



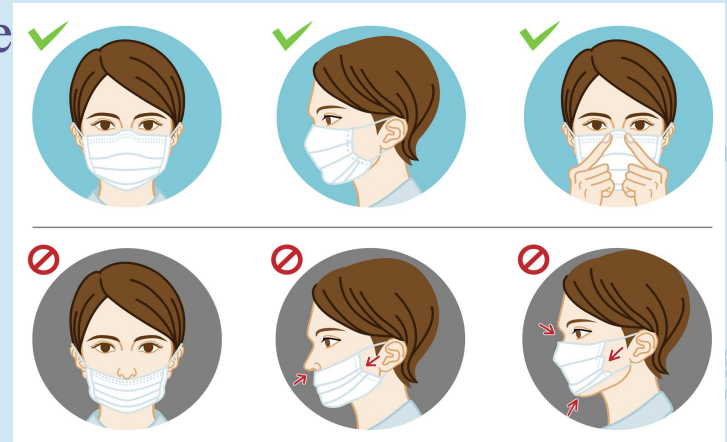
# Máscaras y distanciamiento social



- Las máscaras deben usarse en la parada del autobús, en el autobús, en cualquier momento que se encuentra en el edificio, y si usted está esperando fuera para entrar en el edificio.
- Haga todo lo posible para mantenerse a 6 pies de distancia de las personas tanto como pueda.
- Los escritorios en las clases, la cafetería, biblioteca están a 6 pies de distancia.

B

[Vea este video sobre cómo usar una máscara - haga clic aquí](#)



# Hand Washing



- Each floor has two handwashing stations in the hallway and each classroom has a hand sanitizer dispenser.
- Wash your hands with soap and water or use hand sanitizer as often as possible.
- Hand washing stations are for hand washing only, please do not use them to clean other objects.
- [Watch this hand washing video - click here](#)



# Lavado de manos



- Cada planta tiene dos estaciones de lavado de manos en el pasillo y cada aula tiene un dispensador desinfectante de manos.
- Lávese las manos con agua y jabón o use desinfectante de manos lo más a menudo posible.
- Las estaciones de lavado de manos son sólo para el lavado de manos, por favor no las use para limpiar otros objetos.
- [Vea este video de lavado de manos - haga clic aquí](#)



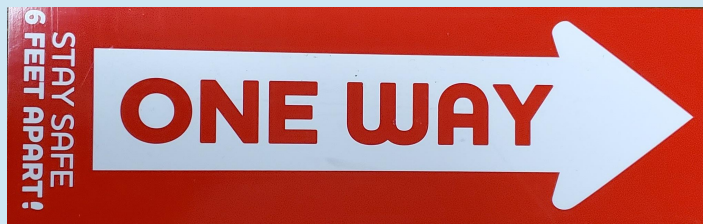
# Hallway



- Each passing period will be 5 minutes.
- Students are expected to follow the directional arrows placed throughout the hallways.
- Students should maintain 6 feet of social distance in the hallway at all times.
- Students should go directly to their next class as all bathrooms will be locked and students do not have lockers during this time.



B



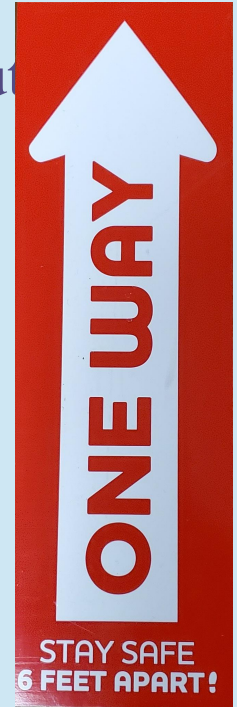
A



# Pasillo



- Cada período de intercambio de clases será de 5 minutos.
- Se espera que los estudiantes sigan las flechas direccionales colocadas a través de los pasillos.
- Los estudiantes deben mantener 6 pies de distancia social en el pasillo en todo momento.
- Los estudiantes deben ir directamente a su próxima clase, ya que todos los baños estarán cerrados y los estudiantes no tienen casilleros durante este tiempo.



B

A



# Food



- Food will not be allowed in school during this time.
- Breakfast/Lunch will not be served to students to consume at school (more information on next slide).
- Students should eat breakfast prior coming to school.
- Learning Labs
  - Students will no longer have a lunch period where they can eat their lunch. Students will go to an assigned learning lab instead.
  - Some students will go to the library and others will go to the cafeteria for their learning lab.
  - During learning lab, students can work on homework or catch up on their assignments.
  - There will be lunchroom monitors supervising learning labs.



# Comida



- No se permitirá la comida en la escuela durante este tiempo.
- El desayuno/almuerzo no será servido a los estudiantes para consumir en la escuela (más información en la siguiente pagina)
- Los estudiantes deben desayunar antes de venir a la escuela.
- Laboratorios de aprendizaje
  - Los estudiantes ya no tendrán un período de almuerzo donde puedan comer su almuerzo. Los estudiantes irán a un laboratorio de aprendizaje asignado en su lugar.
  - Algunos estudiantes irán a la biblioteca y otros irán a la cafetería para su laboratorio de aprendizaje.
  - Durante el laboratorio de aprendizaje, los estudiantes pueden trabajar en la tarea o ponerse al día con sus tareas.
  - Habrá supervisores en el comedor que supervisarán los laboratorios de aprendizaje.

B

A

# Personal Belongings



- Since we should avoid being close to others, this also means we should avoid sharing with others at all times. This includes: computers, chargers, pens/pencils, water bottles, markers, etc.
- Students should be bringing their computer, charger, and pens/pencils to class when they are in building.
- Teachers will let students know if they need to bring any extra school supplies into school.
- Please try to keep all your personal belongings and supplies in your backpack as much as you can since we should not be sharing those with others.



# Objetos Personales



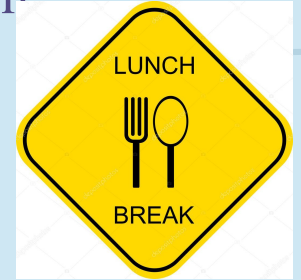
- Puesto que debemos evitar estar cerca de los demás, esto también significa que debemos evitar compartir con los demás en todo momento. Esto incluye: ordenadores, cargadores, bolígrafos/lápices, botellas de agua, marcadores, etc.
- Los estudiantes deben llevar su computadora, cargador y bolígrafos/lápices a la clase cuando estén en el edificio.
- Los maestros informarán a los estudiantes si necesitan traer algún material escolar adicional a la escuela.
- Por favor, trate de guardar todas sus pertenencias y suministros personales en su mochila tanto como pueda, ya que no deberíamos compartirlas con otros.



# Breakfast and Lunch



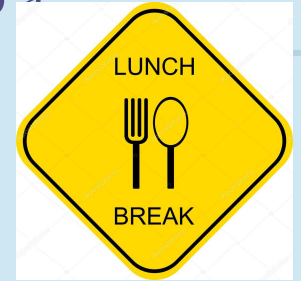
- Lunch and Breakfast for the next day will be provided at the end of each school day.
- A bin with lunches and breakfast will be delivered to each classroom during the last period of the day.
- The lunches and breakfast will be prepackaged in bag.
- On the way out of the classroom, students will take a prepackaged breakfast/lunch bag. **Every student** should take a bag.
- Note: food **cannot** be eaten inside the building or on the bus.



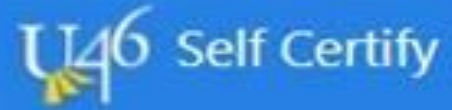
# Desayuno y Almuerzo



- El almuerzo y el desayuno para el día siguiente se proporcionarán al final de cada día escolar.
- Un contenedor con almuerzos y desayuno será entregado a cada salón de clase durante el último período del día.
- Los almuerzos y el desayuno se preenvasarán en bolsa.
- Al salir del aula, los estudiantes tomarán una bolsa de desayuno/almuerzo preenvasada. Cada estudiante debe llevar una bolsa.
- Nota: la comida no se puede comer dentro del edificio o en el autobús.

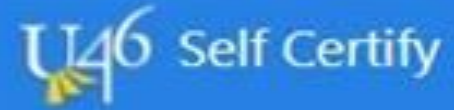


# Self Certifying Is Required



- Before entering any U-46 building, students and staff must self certify daily through **this form** that they do not have a fever or any of the symptoms associated with COVID-19. It's quick and easy.
- Students should discuss with their parents each morning to remind them to complete the survey
- If students are not able to report to school because they have to quarantine for COVID-19, they may attend online classes in the afternoon if they feel well enough.

# Se requiere la autocertificación



- **Antes de entrar en cualquier edificio de U-46, los estudiantes y el personal deben autocertificarse diariamente a través de esta forma que usred no tiene fiebre o ninguno de los síntomas asociados con COVID-19. Es rápido y fácil.**
- **Los estudiantes deben hablar con sus padres cada mañana para recordarles completar la encuesta**
- **Si los estudiantes no pueden presentarse a la escuela porque tienen que ponerse en cuarentena para COVID-19, pueden asistir a clases en línea por la tarde si se sienten lo suficientemente bien.**



# We're all in this together!

- Set a good example and model expected behaviors
- Self Certify before leaving home
- If you are in a room with someone you must wear a mask
- Keep 6 feet away at all times, including with co-workers
- Staff Lounge is not for gathering and eating lunches in groups
- Everyone must use their own fob to enter the building, no free rides!
- Be patient with students, each other and yourself
- If you need something, please ask
- Supervision document will be shared

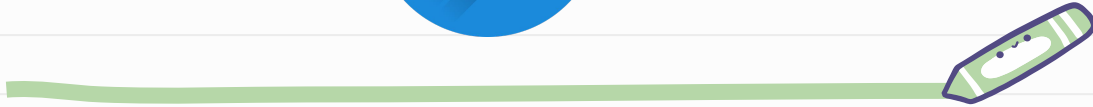
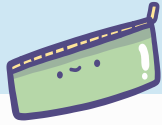
**LET'S  
DO THIS  
TOGETHER**

# ¡Estamos todos juntos en esto!



- Ponga un buen ejemplo y modele los comportamientos esperados
- Autocertificación antes de salir de casa
- Si estás en una habitación con alguien debes usar una máscara
- Mantenga a 6 pies de distancia en todo momento, incluso con compañeros de trabajo
- El salón del personal no es para reunir y comer almuerzos en grupos
- Todo el mundo debe utilizar su propio fob para entrar al edificio, no puede entrar con alguien más!
- Sea paciente con los estudiantes, con uno y otros y con usted mismo
- Si necesita algo, por favor pregunte
- El documento de supervisión será compartido

Any Questions?

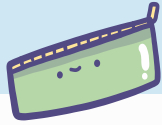


A

B

C

Preguntas?



A

B

C

**We are so excited to have students  
back in the building!**

**Things will be a little different but we can  
do this together!**



**¡Estamos muy emocionados de tener  
estudiantes de regreso en el edificio!**

**¡Las cosas serán un poco diferentes  
pero podemos hacer esto juntos!**

